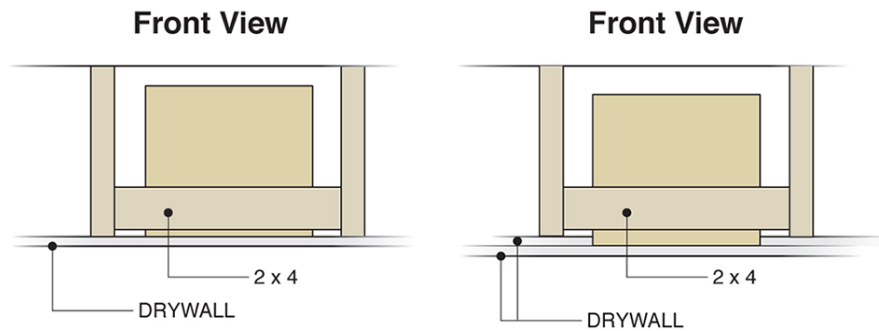


# QUIETBOX INSTALL GUIDE



## HOW TO INSTALL WITH COMMON FRAMING

### POSITIONING WITH LAYERS OF DRYWALL



### INSTALLATION

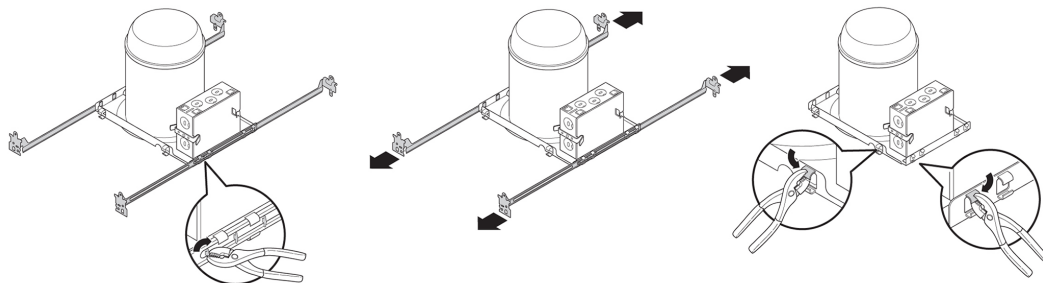


#### MOUNT THE QUIETBOX TO THE JOISTS

Secure the QuietBox to the joists using a common 2x framing member fastened to one side of the QuietBox. Refer to the positioning drawings above for placement.

#### RUN ELECTRICAL AND APPLY VELCRO

Run the supply wire(s) through the pre-drilled hole. Attach the included self-adhesive Velcro hook strips along two sides of the bottom inside of the QuietBox.



#### REMOVE ATTACHMENT ARMS FROM THE RECESSED LIGHT HOUSING

Using a pair of pliers you can twist and remove the tabs holding the attachment arms to the housing. Two sides of the housing need to be flush so the Velcro can fully adhere to a flat surface on the side of the housing frame.

**IsoStore**

#### TELEPHONE

877.866.6473  
208.514.1931

#### WEB

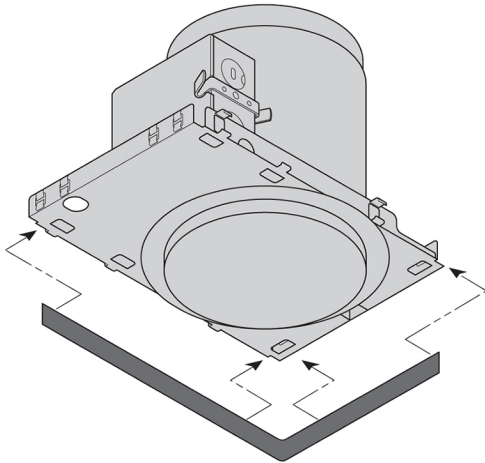
isostore.com  
info@isostore.com

# QUIETBOX INSTALL GUIDE



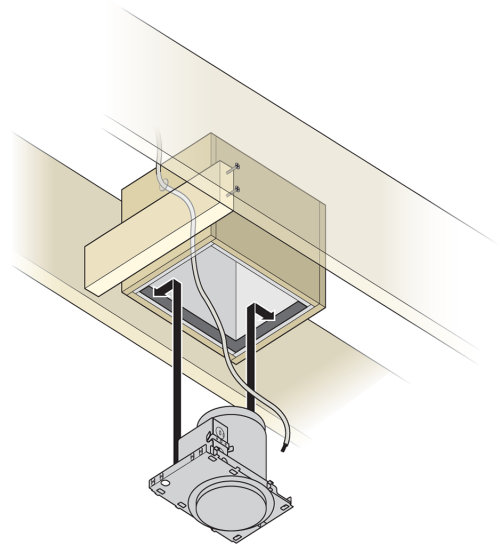
## HOW TO INSTALL WITH GENIECLIP LB

### INSTALLATION CONTINUED



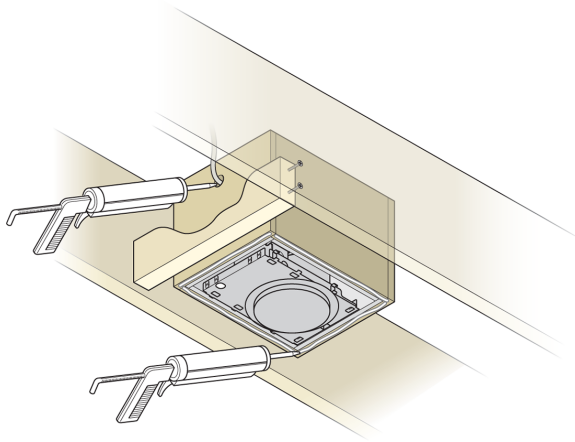
#### ATTACH VELCRO TO HOUSING

Once the attachment arms are removed and two sides of the housing are flush with no obstructions, adhere the other side of the Velcro to the housing as shown.



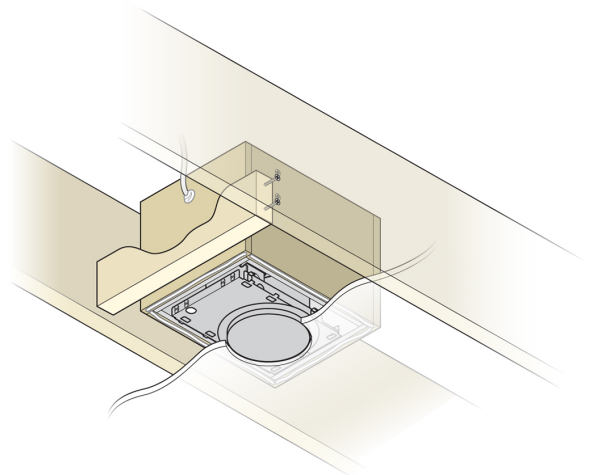
#### FINISH ELECTRICAL AND PLACE HOUSING

Wire the electrical to the light housing. Position the housing in the QuietBox with the two Velcro sides in full contact.



#### APPLY SEALANT TO THE QUIETBOX

The pre-drilled wire hole must be filled with acoustical sealant before covering. We also suggest a bead of sealant along the bottom of the QuietBox frame for the drywall to seal against during drywall installation.



#### FASTEN DRYWALL, OVERLAY QUIETBOX

Only a single layer of drywall is required to overlay the QuietBox. Additional layers should butt to the sides of the QuietBox with the finish layer overlaying the QuietBox.

**IsoStore**

#### TELEPHONE

877.866.6473  
208.514.1931

#### WEB

isostore.com  
info@isostore.com