
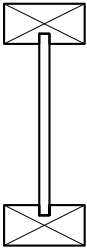
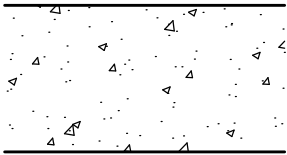


FLOOR-CEILING

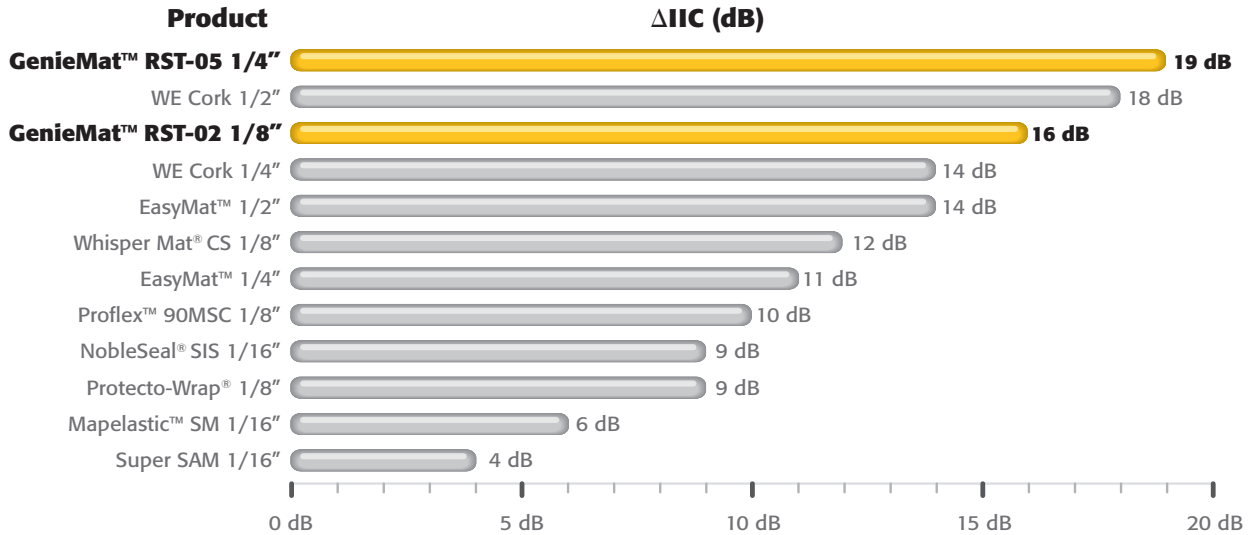
Test Reference Table

Floor Structure	Floor Finish	Floor Underlayment	Ceiling	GenieMat™	GenieClip™	STC	IIC
Open-Web Wood Truss							
	18"	Tile	3/4" Gypsum Concrete	(2) 5/8" Type C GWB	RST-02	YES	54 57
	18"	Tile	3/4" Gypsum Concrete	(1) 5/8" Type C GWB	RST-02	YES	55 55
	18"	Vinyl	3/4" Gypsum Concrete	(2) 5/8" Type C GWB	•	YES	54 53
	18"	Vinyl	3/4" Gypsum Concrete	(1) 5/8" Type C GWB	•	YES	55 52
	18"	Wood	•	(2) 5/8" Type C GWB	•	YES	53 52
	18"	Tile	•	(2) 5/8" Type C GWB	RST-02	YES	53 57
	18"	Tile	•	(1) 5/8" Type C GWB	RST-02	YES	53 55
	18"	Wood	•	(2) 5/8" Type C GWB	RST-02	YES	53 52
	18"	Vinyl	•	(2) 5/8" Type C GWB	•	YES	53 50
	18"	Carpet	•	(2) 5/8" Type C GWB	RST-02	YES	53 58
	18"	•	•	(2) 5/8" Type C GWB	•	YES	53 48
	18"	•	•	(1) 5/8" Type C GWB	•	YES	52 44
18"	•	•	(1) 5/8" Type C GWB	•	•	43 32	
Engineered Wood I-Joist							
	12"	Tile	3/4" Gypsum Concrete	(2) 1/2" Type C GWB	RST-02	YES	54 53
	12"	Tile	3/4" Gypsum Concrete	(2) 1/2" Type C GWB	RST-02	NO, RC-1	54 46
	12"	Wood	3/4" Gypsum Concrete	(2) 1/2" Type C GWB	RST-02	YES	54 57
	12"	Vinyl	3/4" Gypsum Concrete	(2) 1/2" Type C GWB	RST-02	YES	54 52
	12"	Vinyl	3/4" Gypsum Concrete	(2) 1/2" Type C GWB	•	YES	54 51
	12"	•	3/4" Gypsum Concrete	(2) 1/2" Type C GWB	•	YES	54 46
	12"	Tile	(2) 19/32" OSB	(2) 1/2" Type C GWB	RST-02	YES	54 57
	12"	Wood	(2) 19/32" OSB	(2) 1/2" Type C GWB	RST-02	YES	54 56
	12"	Vinyl	(2) 19/32" OSB	(2) 1/2" Type C GWB	RST-02	YES	54 53
	12"	Vinyl	(2) 19/32" OSB	(2) 1/2" Type C GWB	•	YES	54 51
Structural Concrete Slab							
	8"	Tile	•	(1) 5/8" Type X GWB	RST-10	YES	62 60
	8"	Tile	•	(1) 5/8" Type X GWB	RST-05	YES	62 55
	8"	Tile	•	(1) 5/8" Type X GWB	•	NO, RC-1	56 38
	8"	Tile	•	•	RST-12	•	59 55
	8"	Tile	•	•	RST-10	•	54 53
	8"	Tile	•	•	RST-05	•	• 50
	8"	Tile	•	•	RST-02	•	• 48
	8"	Wood	•	•	RST-02	•	• 54
	6"	Tile	•	•	RST-10	•	• 52
	6"	Vinyl	•	•	RST-05	•	• 53
	6"	•	4" Concrete Slab	•	FF-25	•	69 62
	6"	•	4" Concrete Slab	•	FF-50	•	72 64
	6"	•	•	•	•	CSOC-2	67 62
	Composite Floor Systems						
Hambro D500	8"	Tile	4" Concrete Slab	(1) 1/2" Type C GWB	RST-02	YES	62 56
Epicore MSR Deck	•	Tile	5 1/2" Concrete Slab	(1) 5/8" Type X GWB	RST-02	YES	56 51

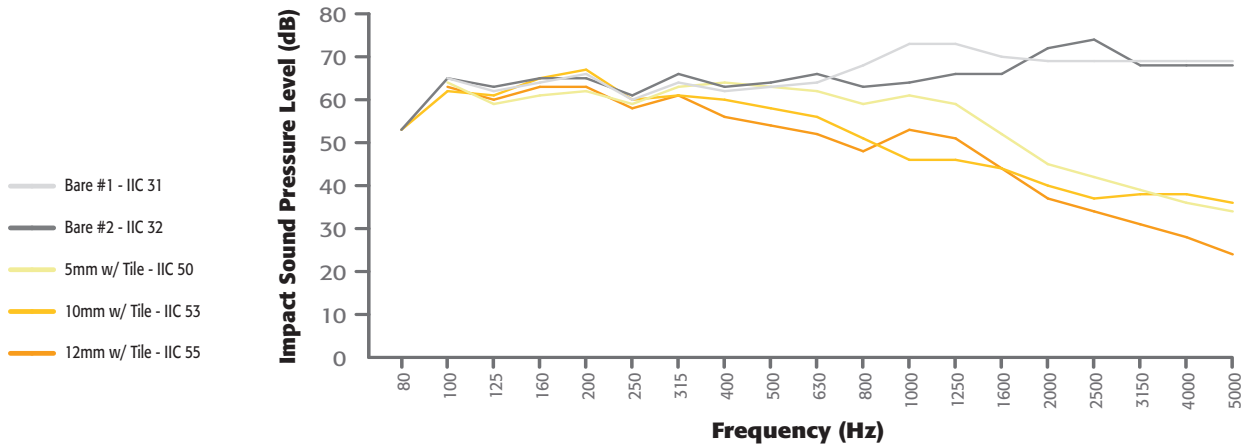
For complete test reports, contact Pliteq Engineering Dept. at (416) 449-0049



ASTM E2179 – Effectiveness of resilient underlayment at improving Impact Insulation Class (6" concrete slab with tile)



ASTM E492 – Acoustical test results of various thicknesses of GenieMat™ RST (8" concrete slab)



Product Specifications				
GenieMat™	Thickness	Roll Size	Roll Weight	Type A Hardness (ASTM D2240)
RST-02	2 mm	4' x 75'	105 lbs	40 durometer
RST-05	5 mm	4' x 30'	90 lbs	40 durometer
RST-10	10 mm	4' x 15'	90 lbs	40 durometer
RST-12	12 mm	4' x 15'	108 lbs	40 durometer
RST-15	15 mm	4' x 15'	132 lbs	50 durometer

GenieMat™ is a trademark of Pliteq Inc.
 The information provided is accurate to the best of our knowledge at the time of printing.
 However, we reserve the right to make changes when necessary without notification.

